

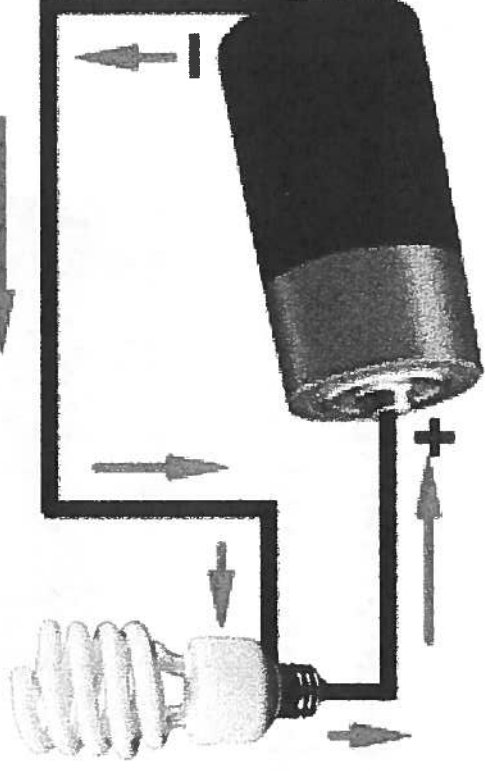
Verbal Linguistic

Interview a community member/elder about their experiences with history of electricity in their community. Write a story from the elder's perspective.



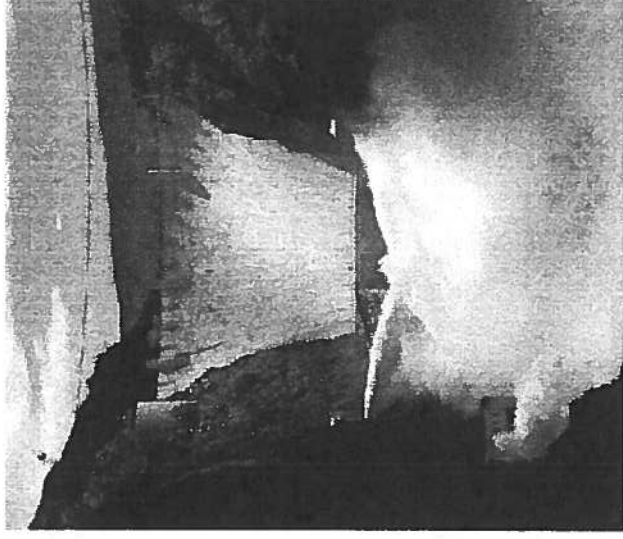
Logical Mathematical

Construct an electric circuit to illustrate the interconnectedness of circuit components.



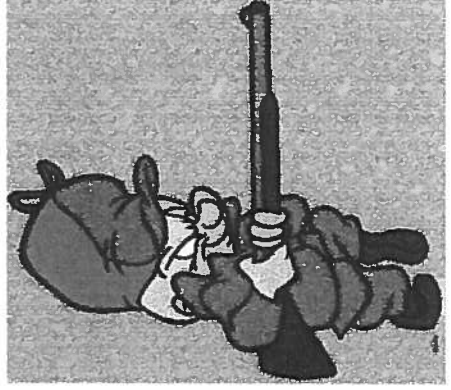
Visual Spatial

Create a visual representation (picture, poster, brochure) that traces energy production and its effect in our community.



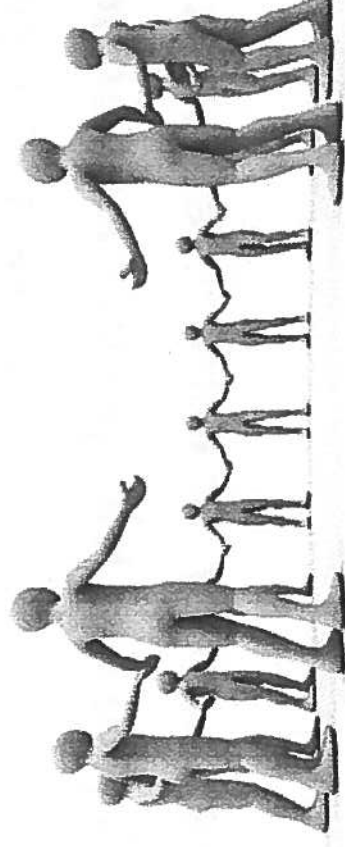
Naturalist

How has the consumption of natural resources (forests, lakes, land) to build hydro-electric generating stations impacted the lives of different community members (trappers, fishermen, hunters)?



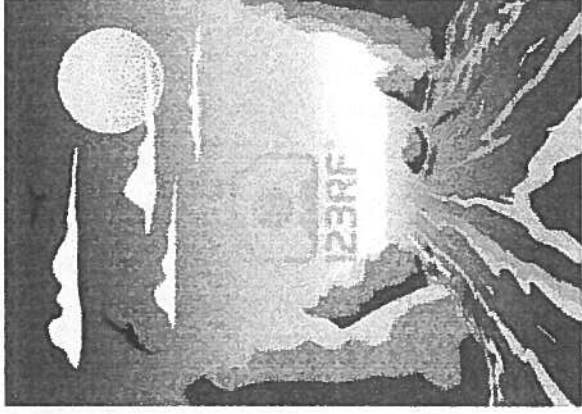
Bodily Kinesthic

Create a movement or a sequence of movements to build a human circuit to represent an electric circuit.



Musical Rhythmic

**Make an instrument to create a representation of water ebbing
and flowing through a generating station.**



Existentialist

Why is there a need for power?

